

Ce-RXTX

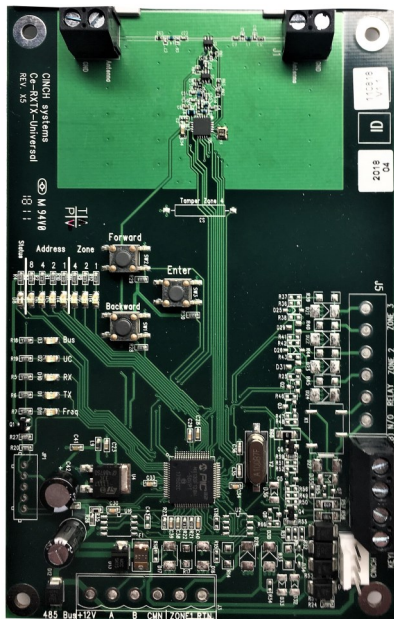
Wireless Receiver and Converter

The Ce-RXTX Wireless converter translates existing 319.5, 345, or 433 MHz wireless transmitters to a security system—via the system data bus. The Ce-RXTX is ideally suited for residential and small business applications.

The Ce-RXTX is offered in 319.5, 345 and 433 MHz frequencies and can be wired directly to the keypad bus of an panel.

Transmitters that pass through the Ce-RXTX are able to send low battery and supervisory messages to the panel.

Upgrade the current security system by using existing wireless sensors — saving sensor replacement expense and installation time.



Specifications

Model Number:	Ce-RXTX
RF Frequencies Available	319.5 MHz, 345 MHz, or 433 MHz
Current Draw	50mA
Operating Temperature Range:	32 to 122°F (0 to 50°C)
Storage Temperature Range:	-30 to 140°F (-34 to 60°C)
Relative Humidity:	95% Non-Condensing
Dimensions (L x W x D):	5.5" x3.5" x 1.25"
Auxiliary Voltage Output	12VDC @ 500mA
Tamper Zone	Separate zone input for tamper

Regulatory

This device complies with part 15 of the FCC Rules.

Operation is subject to the following two conditions:

- (1) This device may not cause harmful interference, and
- (2) this device must accept any interference received, including interference that may cause undesired operation.

FCC ID: 2ABBZ-RF-RXTX

IC: 11817A-RFRXTX

This Class B digital apparatus complies with Canadian ICES-003.

Cet appareil numérique de la classe B est conforme à la norme NMB-003 du Canada.